

**AVISON
YOUNG**

Highly Visible Keystone Location

**FOR
LEASE**

**WILLOWBROOK IV
4701 N Keystone Avenue**

Partnership. Performance.

Opportunity FULL FLOOR AVAILABILITY

- Office suites available range from 920 SF to 20,000 SF (contiguous)
- Call-center or corporate headquarters potential
- Exterior signage facing Keystone Ave
- Owner-occupied building
- On-site management
- Abundant parking with recent lot improvements
- Asking lease rate of \$14.00/SF Full Service Gross

Bill Ehret, SIOR
D 317.210.8808
T 317.210.8801
bill.ehret@avisonyoung.com

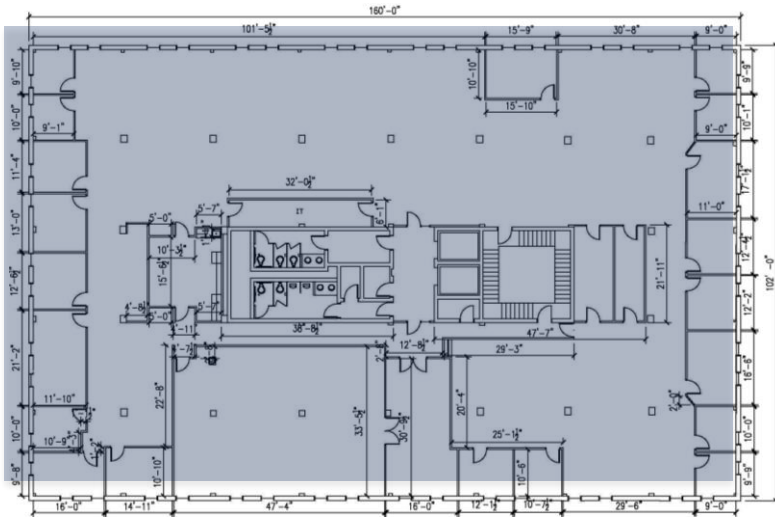
Nancy Merritt
D 317.210.8804
T 317.210.8801
nancy.merritt@avisonyoung.com

135 N Pennsylvania St
Suite 1250
Indianapolis, IN 46204
avisonyoung.com

Willowbrook IV, 4701 N Keystone Avenue

Sample Floor Plan

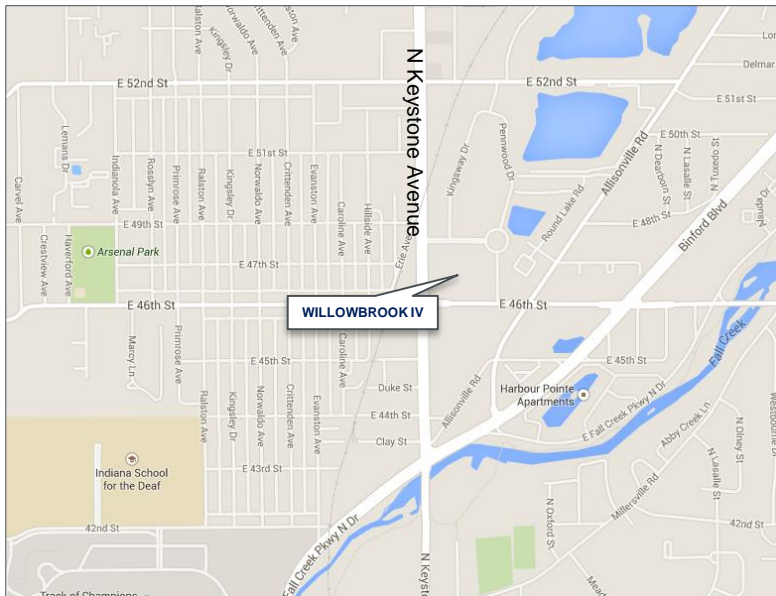
Third Floor – Suite 300: 15,519 SF



PROPERTY PHOTOS



Highly Visible Location with Signage Opportunity



Intelligent
Real Estate
Solutions

avisonyoung.com

135 N Pennsylvania St
Suite 1250
Indianapolis, IN 46204
avisonyoung.com

LEASING CONTACTS:

Bill Ehret, SIOR
317.210.8808
bill.ehret@avisonyoung.com

Nancy Merritt
D 317.210.8804
nancy.merritt@avisonyoung.com